

# **Sigma Alpha Iota**

## **Volusia County Alumnae Chapter**

JULY/ AUGUST 2012

ISSUE NO. 1

### ✕ **Rose of Honor** ✕



#### TWO RECIPIENTS OF THE ROSE OF HONOR

This year we honored two members with the Rose of Honor.

Mary Young, chair of the Phlea Phlam Committee 2011-2012, has continuously supported and contributed to our chapter's activities and volunteers in the area of music in our community.

Valerie Seinfeld, retiring President, also served our chapter on the Executive Board for the past 3 years, served as

chair of our Philanthropies committee for 2011-2012 and is on the Advisory Board at Stetson University's School of

Music. Congratulations Mary and Valerie!



#### *Executive Board*

2012-2013

(from left to right)

Eva Lurtz (Historian)

Valerie Seinfeld (Editor)

Gwen Perney (Treasurer)

Kristin Woolard (Recording Sec.)

Sandra Perry (VP Programs)

Sharla Mercado (President)

not pictured

Amy Crane (VP Ritual)

Chris Leese (Corresponding Sec.)



### ✕ **Patroness Sword of Honor** ✕

Rabel Parson was presented with the Patroness Sword of Honor. Rabel is a member of the Music Advisory Board of Stetson University's School of Music and continues to volunteer to play the organ and piano in our community's musical activities.

Congratulations Rabel!



## May Meeting

Our Chapter held it's year end meeting at the home of Rabel Parson. As we arrived, we were greeted by Rabel's husband Harold, As we entered we sign the Guest Book in the foyer we proceeded to the silent auction. The auction raised \$87.00 for the Scholarship Fund. We would like to thank Valerie and Mary for their donations to this auction and to all that participated. A nice preview of Mary's SAI pot holders and SAI apron. All the Sisters met together on the sun porch for orange juice. Eva Lurtz brought to the meeting our most recent 2011-2012 scrapbook as well as some of the past years' editions.. After breakfast, we began our formal Meeting, installation of officers was officiated by our Province Officer Amy Wolek, presentation of honors, year end reports from our retiring editor Patty Fort, and corresponding secretary Chris Leese, and the presentation of our chapter's new 2x6 vinyl banner. (as seen as the header on the first page) We concluded our meeting with the Founder's Day and closing ceremony.



### Barbara Larson

Barb received her 25th Year Certificate at the May Meeting. Barb was initiated into SAI in 1975, Alpha Delta, Wittenberg University- organ. Barb has been the Minister of Music at Emmaus Lutheran since 2002. In addition to directing the Emmaus choral and handbell ensembles, she serves as organist and plans worship and liturgy. She also does the planning and administration for the concert series and is a frequent

performer. Mrs. Larson attended Wittenberg University, (ELCA) Springfield, OH, where she earned the Bachelor of Music and Master of Sacred Music degrees. She also studied at the Berliner Kirchenmusikschule in Spandau, Berlin, Germany. She is a member of the Association of Lutheran Church Musicians, the American Guild of Organists, Choristers Guild, and has been treasurer of the Volusia County Alumnae Chapter of Sigma Alpha Iota. In addition to her ministry at the church, Mrs. Larson is also a staff accompanist/collaborator at Stetson University in the School of Music.





## Donald McCullough

Donald McCullough, SAI Distinguished Member, will be the new director of the Jacksonville Symphony Chorus, beginning in the 2012-13 season. The final decision was made by Fabio Mechetti, the Jacksonville Symphony Orchestra's music director and principal conductor. Chorus members participated in the evaluation of the three choral conductors during the season. Also taking part in the selection process were Jacksonville Symphony Executive Director Stacy Ridenour and General Manager Richard Naylor. "I'm never more musically fulfilled than when working with a group of singers who demonstrate a serious commitment to taking music to a level that has the power to resonate in the hearts of their audiences," McCullough said. "The Jacksonville Symphony Chorus showed me that they are just that kind of chorus and I couldn't be happier to have been chosen as their new director."

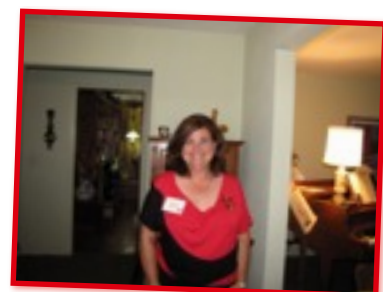
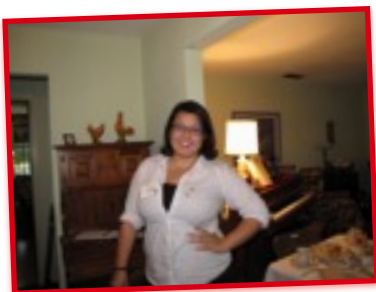
**AUG 2-6**  
**SAI 46th**  
**Convention**

**AUG 18**  
**VCAC**  
**MEETING**

**SEPT 29**  
**Instrument**  
**Petting Zoo**

**OCT 16**  
**"King of the**  
**Instruments"**  
**Musicale**

**NOV 17**  
**Eta Pi**  
**Scholarship**  
**Competition**



*Happy Birthday*

<i>Sandra Perry</i>	<i>July 14</i>
<i>Kristin Woolard</i>	<i>July 22</i>
<i>Valerie Seinfeld</i>	<i>July 23</i>
<i>Patty Fort</i>	<i>August 1</i>
<i>Donald McCullough</i>	<i>August 16</i>



# Sigma Alpha Iota

## Volusia County Alumnae Chapter

### 2012-2013 Meeting Dates

*The following meeting dates are under consideration at this time.*

**Aug 18, Sept 17(formal), October 16, Nov. 17, Jan. 7 Feb. 16, March 18, April 15,  
May 4(formal)**

**Please contact Sharla if you are willing to host a meeting.**

**Thank you Barb(Aug), Jennie(Nov.) Amy(Jan.) Oct. meeting at Stetson**

### SERVICE PROJECT

#### July 21 Assembly of Music CD

Music CD for  
the men and  
women of the  
Armed Services

The CD will be  
shipped to the  
USO and then  
distributed

Time and Place  
TBA  
Sandra Perry,  
chair



*Sandra Perry*

Getting to know one  
of our newest  
affiliates.

Sandra is our newly  
elected VP Programs.  
She is currently  
seeking employment  
in the greater Central  
Florida Area for a job  
Choral Music  
Education. she has been  
working with a  
Junior Theatre  
organization called  
Wekiva River Players

(WRP) for two different  
camps. Most recently  
she served as the vocal  
director for the 'Kids  
Glee Week' and  
in July will present a JR.  
Musical entitled Honk,  
Jr.1 Happy Birthday  
Sandra and Welcome!



*Kristin Woolard*

We happy to announce  
that our recording  
secretary has accepted  
the chair of the Social  
Committee.

Kristin runs her own  
homeschooling group  
called Classical

Conversations and she is  
the Director of the  
DeLand Community as  
well as working as a  
Support Manager for a  
group of communities.  
Recently, she  
coordinated her first  
three day Practicum  
which provides  
education and training  
for the parents  
interested or involved in  
the communities in the  
Jacksonville area and  
part of her territory.  
The mother of three is  
volunteering her musical  
talents for her church's  
VBS this summer, which  
has involved a great deal  
of singing in her lower  
range while dancing!  
Happy Birthday Kristin  
and thank you for your  
contributions to our  
chapter and SAI.



*Sharla Mercado*  
*President 2012-2013*

Sharla Mercado has begun her 4th term as President of the Volusia County Alumnae Chapter. The executive board met on Saturday, June 22 with Sharla at the helm. She is ever mindful of our chapter fulfilling the objectives of Sigma Alpha Iota; in addition she is enthusiastic about developing more interesting programs, increasing attendance, and a bit more social time. Our executive board meeting reflected the emphasis on having fun, while we worked together on planning the coming year of service, we took the time to get to know each other better. Our Vice Pres. Of Membership, Jennie Lee has leads on members to affiliate from our community. Sandra Perry, Vice Pres. of Programs, hit the ground running, planning the upcoming service project on Saturday, July 22, setting up the dates for the October “King of Instruments” Musicale and the Instrument Petting Zoo in September. Kristin Woolard, our Recording Secretary, went over the minutes from our June meeting and volunteered to be the Social Chair. Our Vice President of Ritual, Amy Crane, is more than qualified to work with our ritual and songs and you will just have to wait and see what she has planned, and she has generously offered her home for our January meeting.

In August, Sharla heads to Atlanta as our delegate to the Sigma Alpha Iota National Convention. Mary Young and Barb Larson have been very busy and have almost finished all their projects for Phlea Phlam in plenty of time for the convention. While at the convention, our president will be the delegate, in charge of Phlea Phlam, presenting a workshop on the Instrument Petting Zoo, performing on the piano and she has been nominated for two offices. We are very fortunate to have a sister with so many strengths and talents.



*Amy Crane,*  
*Adjunct Professor of Music*  
*at Stetson University*

*Editor: Valerie Seinfeld*

Volusia County Alumnae Chapter

Region 6

Lambda C Province

vsredroses@gmail.com

Amy Crane was awarded in the spring: The 2012 First-Year Advocate Awards – The Office of First Year and Transition Programs announced this year’s Outstanding First-Year Advocate Awards. This award recognizes faculty, staff and administrators who have gone above and beyond to ensure student success for first-year students. Congratulations Amy!